

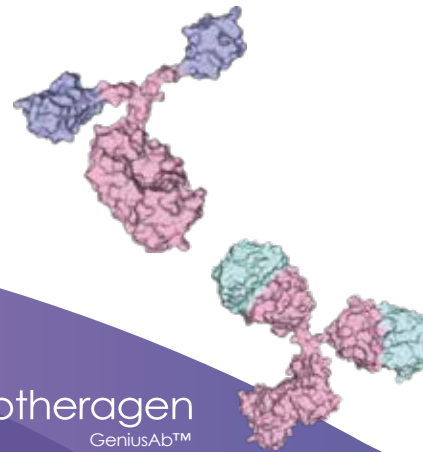
About Protheragen

At Protheragen, we have engaged genetic engineering and developed the GeniusAb™ mouse models for the generation of fully single-domain antibodies. GeniusAb™ mouse model enables the development of high-quality, customized single-domain antibodies for therapeutic, diagnostic, *etc.*

Fully Human Single-Domain Antibody Development Platform

GeniusAb™ single-domain antibody mouse model

- Introduction of human immunoglobulin heavy chain genes
- Robust immune responses against multiple antigens
- Expansion of single-domain antibodies repertoire
- Do not require *in vitro* humanization



Our Core

At the core of our success lies our advanced mouse model, which can generate single-domain antibodies with higher tissue penetration and lower immunogenicity.



📍 101-4 Colin Dr, Holbrook, NY 11741, USA

✉ info@protheragen.us

📞 1-631-533-2057

Your Partner in Fully Human Single-Domain Antibody Development

Customized Single-Domain Antibody



Gene Editing Technologies for GeniusAb™ Mouse Model Development

- Knock-out
- Knock-in
- Targeted transfection
- *etc.*



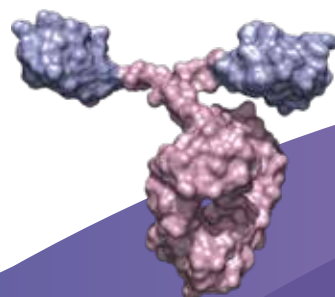
Our company has invested considerable effort in developing state-of-the-art technology to develop mouse models for the generation of single-domain antibodies.

Applications of Single-Domain Antibody

- Immune-based therapeutics
- *In vivo* imaging
- Biosensors
- Drug delivery

Advantages of Single-Domain Antibodies

- Half the size of scFv (single-chain fragment variable) proteins
- Better penetration of solid tumors or the blood-brain barrier
- Highly stable, both chemically and physically



How Can We Help?

Our advanced platform and comprehensive services position us as a trusted partner in the development of innovative therapeutic solutions. We are committed to providing customers with high-quality, customized single domain antibody solutions.

- ✓ **Expertise:** Our team of experienced scientists and researchers is renowned for their expertise in the field.
- ✓ **Cutting-edge Technology:** Our company leverages state-of-the-art technology and innovative approaches to single domain antibody development.
- ✓ **Customization:** We understand that each client's needs are unique. That's why we offer a highly customizable single-domain antibody development service.